



Agenda for a meeting of the Environment and Waste Management Overview & Scrutiny Committee to be held on Tuesday, 26 September 2017 at 5.30 pm in Committee Room 4 - City Hall, Bradford

Members of the Committee – Councillors

CONSERVATIVE	LABOUR	LIBERAL DEMOCRAT AND INDEPENDENT	GREEN
Gibbons Senior	A Ahmed Berry Mohammed Watson	Stubbs	Love Warnes

Alternates:

CONSERVATIVE	LABOUR	LIBERAL DEMOCRAT AND INDEPENDENT	GREEN
Ellis Rickard	Duffy Iqbal H Khan Nazir	Fear	H Hussain

NON VOTING CO-OPTED MEMBERS

Nicola Hoggart

Environment Agency

Julia Pearson

Bradford Environmental Forum

Notes:

- This agenda can be made available in Braille, large print or tape format on request by contacting the Agenda contact shown below.
- The taking of photographs, filming and sound recording of the meeting is allowed except if Councillors vote to exclude the public to discuss confidential matters covered by Schedule 12A of the Local Government Act 1972. Recording activity should be respectful to the conduct of the meeting and behaviour that disrupts the meeting (such as oral commentary) will not be permitted. Anyone attending the meeting who wishes to record or film the meeting's proceedings is advised to liaise with the Agenda Contact who will provide guidance and ensure that any necessary arrangements are in place. Those present who are invited to make spoken contributions to the meeting should be aware that they may be filmed or sound recorded.
- If any further information is required about any item on this agenda, please contact the officer named at the foot of that agenda item.

From:

Parveen Akhtar

City Solicitor

Agenda Contact: Jane Lythgow/Tracey Sugden

Phone: 01274 432270/01274 434287

E-Mail: jane.lythgow@bradford.gov.uk/ tracey.sugden@bradford.gov.uk

To:

A. PROCEDURAL ITEMS

1. ALTERNATE MEMBERS (Standing Order 34)

The City Solicitor will report the names of alternate Members who are attending the meeting in place of appointed Members.

2. DISCLOSURES OF INTEREST

(Members Code of Conduct - Part 4A of the Constitution)

To receive disclosures of interests from members and co-opted members on matters to be considered at the meeting. The disclosure must include the nature of the interest.

An interest must also be disclosed in the meeting when it becomes apparent to the member during the meeting.

Notes:

- (1) Members may remain in the meeting and take part fully in discussion and voting unless the interest is a disclosable pecuniary interest or an interest which the Member feels would call into question their compliance with the wider principles set out in the Code of Conduct. Disclosable pecuniary interests relate to the Member concerned or their spouse/partner.*
- (2) Members in arrears of Council Tax by more than two months must not vote in decisions on, or which might affect, budget calculations, and must disclose at the meeting that this restriction applies to them. A failure to comply with these requirements is a criminal offence under section 106 of the Local Government Finance Act 1992.*
- (3) Members are also welcome to disclose interests which are not disclosable pecuniary interests but which they consider should be made in the interest of clarity.*
- (4) Officers must disclose interests in accordance with Council Standing Order 44.*

3. MINUTES

Recommended –

That the minutes of the meetings held on 2 May, 4 July and 25 July 2017 be signed as a correct record (previously circulated).

(Jane Lythgow/Tracey Sugden – 01274 432270/434287)

4. INSPECTION OF REPORTS AND BACKGROUND PAPERS

(Access to Information Procedure Rules – Part 3B of the Constitution)

Reports and background papers for agenda items may be inspected by contacting the person shown after each agenda item. Certain reports and background papers may be restricted.

Any request to remove the restriction on a report or background paper should be made to the relevant Strategic Director or Assistant Director whose name is shown on the front page of the report.

If that request is refused, there is a right of appeal to this meeting.

Please contact the officer shown below in advance of the meeting if you wish to appeal.

(Jane Lythgow/Tracey Sugden – 01274 432270/434287)

5. REFERRALS TO THE OVERVIEW AND SCRUTINY COMMITTEE

None

B. OVERVIEW AND SCRUTINY ACTIVITIES

6. BRADFORD ENVIRONMENT FORUM ANNUAL REPORT

1 - 12

Document “E” is a report of the Bradford Environment Forum explains the role of the organisation and provides a summary of some of the current and recent projects that illustrate the types of contribution that the voluntary and community sector contribute to life in Bradford and to supporting the District’s priorities.

The report also provides a summary of the commissioned environment initiatives.

Recommended –

- (1) That the Committee acknowledges the achievements of the Bradford Environment Forum with the Council Grant.**
- (2) That the Committee continues to support the work of the VCS partners in the Bradford Environment Forum.**
- (3) That a further report be provided to this Committee to update them on the work undertaken in 2017-18.**

(Mahmood Mohammed – 01274 437399)

7. **ENVIRONMENT AGENCY ANNUAL REPORT** 13 - 22

Document “F” is a report of the Environment Agency which updates the Committee on the work and environmental outcomes achieved by the agency within the District throughout 2016-17.

Recommended –

That the Committee welcomes the report and its content and continues to work in partnership with the Environment Agency.

(Nicola Hoggart – 0203056660)

8. **AIR QUALITY AND THE FRACTION OF MORTALITY ATTRIBUTABLE TO PARTICULATE AIR POLLUTION ACROSS THE BRADFORD DISTRICT** 23 - 32

Previous Reference: Minute 40 (2016-17)

The Strategic Director of Health and Wellbeing will present a report (**Document “G”**) which provides an update on air quality across the District, including information in respect of health impacts for residents; an update on the national context ; the results of routine monitoring and the steps being put in place to tackle the problem.

Recommended –

That Members consider the content of the report and support officers in their continued measures to tackle poor air quality across the District.

(Ruth Lees – 01274 431349)

9. **UTILISATION OF OUTDOOR SPACES FOR HEALTH REASONS** 33 - 46

The Committee is asked to consider **Document “H”** which outlines the opportunities and challenges across the District in respect of the utilisation of outdoor space for health reasons and highlights how it is contributing to the District’s strategic priorities.

The views of the Committee are required.

(Caroline Tomes – 01274 437352)

10. **WORK PROGRAMME 2017/18** 47 - 58

The Chair of the Committee will present **Document “I”** which gives details of the Committee’s work programme for 2017-18.

Recommended –

- (1) That Members consider and comment on the areas of work included in the 2017-18 work programme for the Committee.**
- (2) That Members consider any detailed scrutiny reviews that they may wish to conduct.**
- (3) That the work programme 2017-18 continues to be reviewed regularly during the year.**

(Mustansir Butt - 01274 432574)

THIS AGENDA AND ACCOMPANYING DOCUMENTS HAVE BEEN PRODUCED, WHEREVER POSSIBLE, ON RECYCLED PAPER

This page is intentionally left blank

Report of the of the Bradford Environment Forum to the meeting of Environment and Waste Management Overview and Scrutiny Committee to be held on Tuesday, 26th September 2017

E

Subject:

Bradford Environment Forum (BEF) Annual Report 2016-2017

Summary statement:

Bradford Environment Forum (BEF) brings together third sector organisations and groups which are involved in environmental activity in the Bradford District. BEF seeks to provide representation in strategic discussions and provide communication tools to enable groups to work together to maximise positive environmental activity in the Bradford District.

This report provides a summary of some of the current and recent projects that illustrate the types of contribution the Voluntary and Community Sector contribute to life in Bradford and to supporting the District's priorities.

The report also provides a summary of the commissioned environment initiatives (projects).

Report Contact: Mahmood Mohammed
Phone: (01274) 437399
E-mail: mahmood.mohammed@bradford.gov.uk

Portfolio:

Environment and waste

Overview & Scrutiny Area:

Environment and Waste



1. SUMMARY

- 1.1. Bradford Environment Forum (BEF) brings together third sector organisations and groups which are involved in environmental activity in the Bradford District. BEF seeks to provide representation in strategic discussions and provide communication tools to enable groups to work together to maximise positive environmental activity in the Bradford District.
- 1.2. Bradford Community Environment Project co-ordinate the BEF with support from CNET and the Bradford District Assembly.

2. BACKGROUND

2.2 Bradford Environment Forum (BEF) was established in 2002, becoming a constituted organisation in 2008. The object of BEF is to provide third sector representation in strategic discussions and to provide an environmental network in the Bradford District which will enable third sector organisations and community groups to work together and to maximise positive environmental activity in the Bradford District.

2.3 BEF is an informal network of organisations involved in environmental activity within the Bradford District. It includes representatives from voluntary and community sector environmental groups, the Council, businesses, interested individuals and is open to all. Any individuals, groups or schools wishing to get involved in local environmental projects should contact Bradford Community Environment project

2.4 BEF meets its aims by:

- Bringing together people, resources and ideas to enable positive environmental activity in the Bradford District
- Co-ordinating events, meetings and discussion
- Providing a forum for exchange of information.
- Creating opportunities for partnership working

2.5 Resource constraints - Due to increasing financial and resource pressures on organisations (especially those with paid staff), BEF activity is limited. Communication is still facilitated by an email group but the frequency of meetings has been reduced. Demand from organisations requiring services, especially schools and community organisations exceed capacity.

2.6 Benefits to the District - The constituent VCS organisations and groups play an active and important role in improving Bradford's environment and increasing community confidence in engaging and working with the outdoors. The BEF partners offer opportunities for active engagement in environmental projects for schools, businesses and community groups.

2.7 VCS organisations contribute to the delivery of several Council strategies and functions;

- Food Strategy; planning and development as well as implementation
- Woodlands Strategy; maintenance of woodlands as well as tree planting
- Biodiversity, Nature and People; managing spaces for the benefit of people and



wildlife.

- Play and early years; Forest Schools and resource use.

2.8 This report highlights, as examples, three of the current projects being delivered in the district. They emphasise the importance of support received from the Council through the Environmental Commissioning Fund (ECF).

Forest of Bradford - Forest of Bradford is an exciting initiative to increase woodland / tree cover throughout the district in partnership with its local communities. The project was set up in 1998 with the aim of establishing 480 hectares of native woodland, equivalent to one million trees. Local schools, businesses, other organisations and individuals have helped develop and carry out the planting schemes.

To date, the project has planted 465,000 native trees / shrubs at over 350 different sites across Bradford district. In addition to new planting, the project offers advice and practical assistance with existing woodland management and can help draw in grant aid for this work

The previous year continued to challenge the project in terms of financing its core work, of increasing woodland cover in Bradford district in partnership with local communities. The Environment Commissioning Fund (ECF) from CBMDC continues to play a crucial role in supporting core work and in leveraging in outside sources of funding. ECF funding provides salary and some overhead costs for one member of staff for two days per week. The funding provided enables the project to work with volunteer groups, land owners and businesses in planting 30,000 trees per year and managing a number of the district's publically accessible woodlands. At the end of last year's planting season the project had significantly exceeded its important milestone of planting half a million trees across Bradford district.

We have been very successful in the level of public engagement developed in delivering our work this year. Groups such as Sant Nirankari Mission Yorkshire mentioned above have attended events in record high numbers. We also continue to work regularly with Ahmadiyya Muslim Youth groups from Bradford and the wider West Yorkshire district. This has been a very good year for business engagement, with more staff day time volunteered than in previous years. We have worked with approximately 730 volunteers this year from a wide cross section of our community and across the age range (infant school to 75 yr olds.)

In February, we held a tree planning session at Dealburn Road, Low Moor, Bradford. 110 members of the Sant Nirankari Mission and 25 volunteers from Forest of Bradford planted 2500 trees in a little over an hour. EVCS funding allowed us the time to deliver this project, a record number of individuals involved and trees planted in that time.



BEES - core services funded by ECF include -

- The Conservation Volunteer Group engaging a wide range of volunteers seeking to make positive environmental change in their neighbourhoods. The programme is an opportunity to develop skills, undertake healthy activity, retain social contact and contribute to management of wildlife rich green space in Bradford. The group takes referral from health and employment agencies as well as self-referred volunteers.
- A programme of Wildlife Field Visits offering a shared learning experience, lifelong learning and a valuable resource of species recording for sites in the district and beyond.
- Community Orchard providing local food and events (Apple Day). In addition to core funding, this project will also be supported by a grant from Postcode Local Trust from July 2017 to June 2018

The council grant supports one part time member of staff, plus some casual hours, but it cannot be underestimated how essential it is as a source of income in order to run programmes that can be supplemented by further contact work.

Two other members of staff are funded part time by Big Lottery (Reaching Communities) to deliver environmental skills training to young people.

The following feedback from a couple of participants illustrates how the BEES services not only address the environmental outputs such as habitat management, but also offers a chance for personal development and a framework for support.

My contact with the Bees Wildlife Field Group has been over 20 years. When I initially joined the field trips I was working within the Social Services department in Bradford supporting elderly people and their families, later combining this responsible and stressful work with the care of an elderly father. A Bees day out helped to sustain me giving me something to look forward to as well as fresh air and exercise.

Moving on in retirement I assumed a leadership role in the group and with the support on offer was able to develop my interests and explore the wide range of environments of Yorkshire and beyond. In addition I have enjoyed the social contacts made in the group as well as contacts with professionals in the field. The group gave me a purpose in retirement and a means of continuing to support and care for my fellow men. The group has developed strong bonds over the years and it has offered support and encouragement in times of difficulty such as illness. I know the work we do is much admired and of assistance to people and organisations outside the group. I now at the age of 72 plan to take more of a back seat but have been mindful of developing the confidence of others in the leadership this role. We hope Bees will continue to flourish in the future.

I would say that the existence of BEES has a profound effect on my quality of life. For the past 30 years of its existence in Bradford I have been able to attend its talks, wildlife field visits, conservation programmes and events – in the past sometimes taking a day off work as holiday in order to do so.

BEES has enabled me to access countryside that is often inaccessible to me (as a non-driver). It has also been affordable. This has enabled me to live in a city, yet observe and



visit the countryside on a regular basis – something I value very much.

BEES has also provided the means and people, whereby so much knowledge is shared and exchanged – expertise on birds or botany or facts about local history and geography is passed on. In addition, there is the general bon-homie or friendly social exchange in conversations and banter on journeys and walks.

As a person recovering from mental ill-health, BEES has proved invaluable. BEES welcomed me back when I was not completely well, no questions asked. BEES provided a friendly social group, access to deep countryside, which would be impossible without the group for me. A walking group does not go to observe nature like this group does. As a single person interested in nature, BEES also provides the means for fulfilling this interest/need safely (walking on one's own is not always a safe idea).

Bradford Community Environment Project (BCEP) - BCEP contributes to the sustainable regeneration of Bradford district, through effective environmental programmes, inspired by community need. BCEP provide: green space improvements, environmental education and play and specialise in sustainable local food production. We run a Scrap Store and RePaint programmes, Public Health food growing and healthy eating commissions, Forest Schools training, provision and network support, green space improvement and community greenspace management. We work with twenty primary schools helping develop capacity to deliver the curriculum using their outdoor resources.

BCEP works with deprived communities across Bradford district including hard to reach groups including refugees and people experiencing mental illness, at risk groups, primary school children, BME groups, general public, the elderly and the isolated.

- Scrap Magic
- Forest Schools
- Gardening for Health
- Habitat Heroes
- The Roughts – Woodland Learning
- Urban Design Team
- Wibsey Park Community Garden
- Bradford Community RePaint

BCEP have delivered 12 sessions with a specific waste and recycling theme over this quarter; these have been based on the use of compost bins in a garden to minimise green waste to landfill, litter picking in school grounds and reusing waste materials to make plant pots.

Some feedback from users:

“Excellent, reliable and full of good ideas and advice for me to learn from.” Primary teacher.

“I couldn’t have wished for a more flexible and sensitive approach to clients with often multiple personal and social issues.” Voluntary sector project worker



“Garden (allotment) makes me happy. I eat more fresh food. I do more walking. I like digging, and pick and eat. I make friends, I bring daughter, she likes too”. –client from refugee and asylum seekers’ allotment, Scotchman Rd, BD9

Our Lady and St Brendan’s Primary- A school with an intake from areas of high deprivation – Thorpe Edge and Ravenscliffe – children at Our Lady and St Brendan’s have limited positive experience of outdoor environments, low levels of attainment across the school and a need for understanding of healthy eating. Recognising this, the school engaged Habitat Heroes to create and maintain outdoor spaces with the children in Year 3, managing a school wildlife and vegetable garden to encourage children to broaden their experience and try new things they would normally have limited access to.

Recently this has included harvesting, cooking and eating strawberries, rhubarb, purple sprouting broccoli, chard, peas, beans and nasturtium. Teachers have commented that the majority of the children would never have chosen to eat most of these had they been served in the school kitchen: the full seed-to-plate involvement inspires them to overcome their ‘fears’. Children have also been involved in woodland crafting activities and tried their hand at creating different features for the outdoor garden including planting and maintaining biodiversity planters. Year 2 in particular enjoyed a ‘forest schools’ day as a part of this they took part in den building and toasted marshmallows over a fire.

“Children here really benefit from these types of activities, it engages them so effectively”
Teacher

3.0 Strategic Representation

Individual BEF members play an active part in a number of strategic roles, BCEP currently Chair the reconvened Bradford Environment Forum (BEF). As Chair of BEF BCEP are members of the Assembly Core Group working with leads of all the forums for a coordinated district wide approach linking VCS strategy and activity with the broader district aims. The Assembly Core Group organises the annual Bradford District VCS Assembly Conference. BCEP attend the Bradford Council VCS Relationship Management Group (RMG)

BEF members are representatives on a wide range of forums including:

- Active citizens group of the Safer and Stronger Communities Partnership
- Young lives Bradford
- Health and Wellbeing Forum
- Environment and Waste Management Scrutiny Committee.

4.0 OTHER CONSIDERATIONS

This report cannot accurately list examples of all VCS activity that supports the district’s environmental priorities. It has not been possible to collate information from all currently active organisations.



Examples of these groups are the many 'Friends of Groups' working in Council Woodlands and parks, Horton Community Farm dedicated to growing and supplying food, Bradford Urban Wildlife Group who monitor and manage land for wildlife as well as offer a range of educational talks and reserves such as Denso Marston supported by private business.

The VCS remains a responsive sector with the opportunity to act quickly to opportunities that arise. This provides the basis to grow when the funding climate changes, and to explore models of social enterprise.

5.0 FINANCIAL & RESOURCE APPRAISAL

The Council funded projects are funded for 2 years to 31st March 2019.

BCEP	Grant amount	£9,046.80
BEES	Grant Amount	£17,911.80
Forest of Bradford	Grant amount	<u>£15,881.40</u>
Total		<u>£42,840.00</u>

All projects are delivering as planned.

6.0 RISK MANAGEMENT AND GOVERNANCE ISSUES

None

7.0 LEGAL APPRAISAL

None

8.0 OTHER IMPLICATIONS

8.1 EQUALITY & DIVERSITY

The Bradford Environment Forum continues to work across the district with in partnership with schools, businesses, community organisations and individuals from all backgrounds and abilities. It is very much focused on community cohesion and developmental opportunities in delivery of its projects.

8.2 SUSTAINABILITY IMPLICATIONS

This is a key area of work for the Environment Forum both in terms of sustainability of the natural environment and sustainability for the organisations involved in delivery. The financial resources continue to present challenges for staff and delivery of projects but support from businesses and volunteers has been very much needed.

The biggest falls in VCS income have been from government sources. VCS organisations have to develop a sustainable funding package that supports long term capacity to deliver change against the need for their resources to have the biggest impact possible.

8.3 GREENHOUSE GAS EMISSIONS IMPACTS

This is a key area of work for the Bradford Environment Forum and projects such as tree



and hedge planting mitigate against the impact of greenhouse gases. A major role undertaken by BEF is to educate on the harmful impact harmful emissions and provide practical projects and guidance on how to reduce the gases .e.g. walk to school schemes and environmental improvement work.

8.4 COMMUNITY SAFETY IMPLICATIONS

None

8.5 HUMAN RIGHTS ACT

None

8.6 TRADE UNION

None

9.0 NOT FOR PUBLICATION DOCUMENTS

None

10.0 OPTIONS

10.1 That Bradford Council ceases the grant support given to Bradford Environment Forum and encourages volunteers to continue to undertake the work underlined in this report.

10.2 The Bradford Environment Forum continues to be supported by the Stronger Communities Coordinator to build on the commissioned work undertaken in this report.

11.0 RECOMMENDATIONS

11.1 That the Committee acknowledges the achievements of the Bradford Environment Forum with the council grant.

11.2 That the Committee continues to support the work of the VCS partners in the Bradford Environment Forum.

11.3 A further report is provided to this committee to update them on the work undertaken in 2017-18

12.0 APPENDICES

Appendix 1 Annual performance summary of Council funded environment projects

13.0 BACKGROUND DOCUMENTS

None





Appendix 1

Annual performance summary of Council funded environment projects.

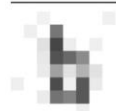
BCEP Grant funded amount £9,046.80		
Output/outcome	Expected	Achieved
Number of education sessions delivered	100	132
Teachers engaged in consultation and review	4	49
New biodiversity features created	8	5
Existing biodiversity features maintained	12	14
Individual schools working with	4	3
Sessions delivered	100	136
Sessions with waste and recycling theme delivered	Ongoing	22
Individual children engaged	750	1,335
Learning opportunities delivered	1,500	2,200



BEES	Grant Amount	£17,911.80
Output/outcome	Expected	Achieved
Organise regular conservation volunteer days	36	53
Regular Wildlife Field Visits to Bradford Wildlife Areas and other wildlife sites.	29	35
Deliver a programme of public events, and attend others E.g. blossom day, Apple Day	2	2
Deliver a programme of activities with schools, colleges and community groups	4	3
Number of individuals engaged each quarter	120	116
New individuals engaged	24	32
Total number of user sessions per quarter	400	410
Number of people engaged each quarter	80	120
New people engaged	4	8
Total number of user sessions per quarter	290	600
No of people engaged in activities at public events	440	365
No of people engaged in activities with schools, colleges and community groups	250	35



Forest of Bradford	Grant amount	£15,881.40
Output/outcome	Expected	Achieved
Contact landowners to develop program of planting	7 Hectares planted	11
Establish a volunteer day program for the year for at least 200 days (mid week and week end)	200 volunteer days	223
Establish at least one hectare of biomass coppice woodland	1 hectare	1.1
Work with businesses on practical planting days and donations towards biomass woodland	6 business involvement schemes contributing to biomass woodland establishment	9
Contact landowners to develop program of planting	650m minimum new native hedgerow	1100
Involve at least ten new groups to the project in the year	Ten new groups	10





Report of the Environment Agency to the meeting of Environment and Waste Management Overview and Scrutiny Committee to be held on 26 September 2017

F

Subject:

Environment Agency Annual Report

Summary statement:

This report is to update the Committee on the work and Environmental Outcomes achieved by the Environment Agency within the Bradford District throughout 2016-2017.

Nicola Hoggart
Senior Advisor – Partnership &
Strategic Overview

Report Contact: Nicola Hoggart
Phone: 02030256660
E-mail: nicola.hoggart@environment-agency.gov.uk

Portfolio:

Yorkshire Flood Risk Management

Overview & Scrutiny Area:

N/A

1. SUMMARY

- The Environment Agency protects and improves the environment.
- Acting to reduce the impacts of a changing climate on people and wildlife is at the heart of everything we do.
- We reduce the risks to people, properties and businesses from flooding and coastal erosion. We are committed to supporting more than 1,500 flood alleviation schemes throughout the country, which will better protect more than 300,000 homes by 2021.
- We protect and improve the quality of water, making sure there is enough for people, businesses, agriculture and the environment. Our work helps to ensure people can enjoy the water environment through angling and navigation.
- We look after land quality, promote sustainable land management and help protect and enhance wildlife habitats. And we work closely with businesses to help them comply with environmental regulations.
- We can't do this alone. We work with government, local councils, businesses, civil society groups and communities to make our environment a better place for people and wildlife.
- **This annual report is to update the committee on the Environmental Outcomes that the Environment Agency has achieved within the Bradford District throughout 2016-2017.**

2. BACKGROUND

➤ Flood Risk Management

In July last year we set up the Bradford Flood Programme Board with our partners Bradford Council and Yorkshire Water. The board secured £850,000 Local Levy funding for the Bradford Flood Programme, to investigate options for reducing flooding problems, and develop community resilience and stewardship projects.

The board drives our catchment and evidence based approach to tackling flood risk across Bradford. It covers multiple activities supported by Bradford Investment Group, Community Resilience and Engagement Group and partners Network Rail, Aire Rivers Trust, and volunteers.

Detailed studies known as Initial Assessments (IA) have been produced for priority locations along the River Aire. Completed IAs, funded by Flood Defence Grant in Aid (FDGiA), can be found on Bradford Council's website:

<https://www.bradford.gov.uk/emergencies/flooding/flooding-information-and-support/>

IAs are supporting the development of an integrated programme of work, which includes: modelling assessments of upstream storage options, surface water modelling, in-water debris clearance at the IA locations and enabled the partnership to send out Flood Resilience and Community Engagement information packs.

The role of the Flood Programme Board is to ensure we achieve value for money to protect those at highest flood risk. One theme of the IA outputs are the benefits of managing flows through upstream storage areas. Time and hard work will be needed to make this happen in the River Aire catchment. It is part of a long-term investment programme across the district. Once we have updates to the River Aire model (autumn 2017), we will complete further upstream storage scenarios and work on options appraisals to enable preferred options to be identified and taken forward should we secure funding.

Hundreds of homes and businesses along the Rivers Aire, Wharfe and Worth have taken the important step of signing up to our free flood warning service. To register, and for more information, including current river levels, call Floodline 0345 988 1188 or visit www.gov.uk/check-flood-risk.

Having a concise plan is the best way to protect people and their properties from the risk of flooding. Advice that can be given to residents is that you do not have to live in a flood risk area to be affected by flooding, and that the geography of Bradford is such that higher ground can also be affected by non-river flooding, surface water and/or groundwater flooding.

We will continue to work with Bradford Council on town and parish council emergency plans, the plans are helping to enhance resilience in the face of any emergency, including flooding. Plans give structure to community responses and supports the help communities can offer in an incident. Being 'local' means valuable information can be sourced quickly. We are developing enhanced communication between emergency services and local communities by using two way radios so 'real time' information is readily available to responders so decisions will better reflect the current situation.



Flood Drop-in sessions.

➤ **Industry & Waste Regulation and Tackling Illegal Waste Sites.**

We are responsible for regulating the most polluting industries in England and Wales, under the national Environmental Permitting Regulations (EPR) regime. EPR covers emissions into air and water, and on land, as well as other environmental considerations.

Throughout this last year we have remained focussed on regulating the 129 Waste Sector

Environmental Permits and 17 Installations Permits within the district and tackling those illegal waste sites (IWSs) that pose the highest environmental and community risk.

➤ **Water Quality**

We continue to work on the core principles of the Water Framework Directive (WFD), which are to prevent deterioration of our rivers, by protecting what we've already got in our water environment. It means we are looking after the most important pieces of water that is; drinking water, protected areas, bathing waters and habitat sites. We do this when we take regulatory decisions or when we design works in flood risk areas.

The River basin management plans produced under the WFD are very important documents that are strategic standing advice that we or any of our partners can look at and say- that's how we want to manage the future of the water environment.

The WFD cycle enables us to move rivers to 'good status' by looking at the places where benefits relative to costs are great, but also look at the opportunities to work with others. Partnership working with Bradford Metropolitan District Council and Friends of Bradford Beck to share evidence and understand how a catchment works has helped us and will help us understand the environment but also access different delivery mechanisms which will improve the water environment.

➤ **Incident Management**

We are a Category 1 Responder under the Civil Contingencies Act (CCA) 2004, which places incident planning, response and recovery obligations on us in relation to the carrying out of our functions under existing legislation such as the Water Resources Act 1991, Environment Act 1995 and Flood and Water Management Act 2010.

We respond to a wide variety of incidents affecting people and the environment. We have area offices across England as well as a national office. Unlike most other Category 1 Responders, we are a national organisation with local delivery. We define a major incident as 'an incident or event that is, or is likely to be, significantly disruptive to normal operations requiring the implementation of special arrangements'. To ensure effective working between all response partners, our ways of working are compatible with the framework, principles and language of the wider UK Government emergency response arrangements.

Our core activities of regulating industry, protecting water, land and biodiversity and managing flood and coastal risk represent our prime contribution to preventing and mitigating the impacts of incidents. Depending on the nature of the major incident we will provide general or regulatory advice, environmental data, public warnings and information, and an operational response

From April 2016 to April 2017 the Environment Management teams dealt with nearly 600 pollution incidents around the Bradford District, of those the Waste and Water industry came out as the highest recorded source sector. The photographs below detail the range of incidents we received and matters investigated. Our actions can range from warning letters to prosecution. Incidents can be reported on the 24 hour incident hotline on: 0800 80 70 60.

Illegal Waste Activity South West Bradford



Illegal Waste Activity South East Bradford



Waste Deposit land above Keighley



Bradford beck, over 50 incidents reported on Bradford Beck and its tributaries





M606 Paint spill





3. OTHER CONSIDERATIONS

➤ N/A.

4. FINANCIAL & RESOURCE APPRAISAL

➤ None.

5. RISK MANAGEMENT AND GOVERNANCE ISSUES

N/A.

6. LEGAL APPRAISAL

➤ N/A

7. OTHER IMPLICATIONS

7.1 EQUALITY & DIVERSITY

N/A.

7.2 SUSTAINABILITY IMPLICATIONS

- N/A.

7.3 GREENHOUSE GAS EMISSIONS IMPACTS

- N/A.

7.4 COMMUNITY SAFETY IMPLICATIONS

- N/A.

7.5 HUMAN RIGHTS ACT

- N/A.

7.6 TRADE UNION

- N/A.

7.7 WARD IMPLICATIONS

- N/A

7.8 AREA COMMITTEE ACTION PLAN IMPLICATIONS (for reports to Area Committees only)

- N/A.

8. NOT FOR PUBLICATION DOCUMENTS

- None.

9. OPTIONS

- Our ambition is to continue our strong and authentic relationship with City of Bradford Metropolitan District Council members and colleagues across all of our business areas. Sharing data, information and resources will enable us all to protect and improve the environment for people and wildlife.

10. RECOMMENDATIONS

Recommended -

The committee welcomes the reports and its content and continues to work in partnership with the Environment Agency.

11. APPENDICES

- None.

12. BACKGROUND DOCUMENTS

➤ None.

Report of the Strategic Director of Health and Wellbeing to the meeting of Environment and Waste Overview and Scrutiny Committee to be held on September 26th 2017.

G

Subject:

**Air Quality and the fraction of mortality attributable to particulate air pollution
across the Bradford District**

Summary statement:

In December 2016 a report was brought before members of the committee to provide update on air quality across the Bradford District. Members have now requested a further update. This report provides information on the health impacts of air quality on the residents of Bradford, an update on the national context, the results of the routine monitoring which is carried out and the steps which are being put in place to tackle this problem.

Beverley Maybury
Strategic Director Health and
Wellbeing

Report Contact: Ruth Lees Principal
Environmental Health Manager

Phone: (01274) 431349
E-mail: ruth.lees@bradford.gov.uk

Portfolio:

Health and Wellbeing

Overview & Scrutiny Area:

Environment and waste

1. SUMMARY

In December 2016 a report was brought before members of the committee to provide update on air quality across the Bradford District. Members have now requested a further update. This report provides information on the health impacts of air quality on the residents of Bradford, an update on the national context, the results of the routine monitoring which is carried out and the steps which are being put in place to tackle this problem.

2. BACKGROUND

- 2.1 Poor air quality is a significant public health issue. The burden of particulate air pollution in the UK in 2008 was estimated to be equivalent to nearly 29,000 deaths and an associated loss of population life of 340,000 life years lost.

The Public Health Outcome Framework indicator Fraction of Annual All-Cause Adult Mortality Attributable to human-made particulate Air Pollution (measured as fine particulate matter, PM2.5) Is a measurement of the mortality associated with long-term exposure to man made air pollution. The indicator is expressed as the percentage of annual deaths from all causes in those aged 30 and over.

In Bradford the indicator in 2015 was 4.2% compared to Yorkshire and Humber 4.3% and England 4.7%, this equates to approximately 2,300 years of life lost per annum in Bradford due to the health effects of particulates.

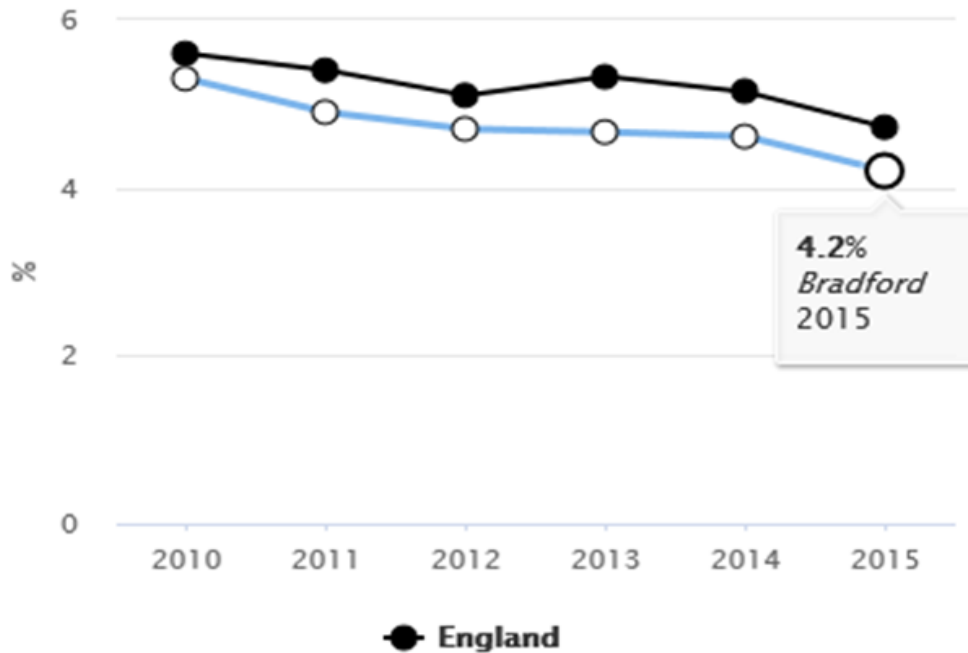
The indicator is a district wide indicator and does not capture the variation across the district. In urban areas the % will be significantly higher and conversely it will be much lower in rural areas where pollution is lower.

Fraction of mortality attributable to particulate air pollution (2015)

Proportion -%

Area	Recent Trend	Count	Value	Lower CI	Upper CI
England	—	-	4.7	-	-
Yorkshire and the Humber region	—	-	4.3	-	-
Calderdale	—	-	3.7	-	-
Kirklees	—	-	3.9	-	-
York	—	-	3.9	-	-
North Yorkshire	—	-	4.0	-	-
Barnsley	—	-	4.0	-	-
Sheffield	—	-	4.1	-	-
Bradford	—	-	4.2	-	-
Wakefield	—	-	4.2	-	-
Leeds	—	-	4.3	-	-
Rotherham	—	-	4.4	-	-
Doncaster	—	-	4.5	-	-
Kingston upon Hull	—	-	4.8	-	-
East Riding of Yorkshire	—	-	4.8	-	-
North Lincolnshire	—	-	4.8	-	-
North East Lincolnshire	—	-	5.7	-	-

Fraction of all-cause adult mortality attributable to air pollution - Bradford 2010-2015



Public Health England have made available the above data from 2010 to 2015, caution is required when considering the apparent trends over time for a number of reasons:

Concentrations of PM 2.5 vary from year to year due to the weather. This variation due to weather is generally greater than the year to year variation from changes in emissions. The data presented are of modelled concentrations of PM2.5 arising from human activities. There is some uncertainty associated with the apportionment of particles as human-made or naturally occurring.

The methods and data inputs for the pollution modelling are continually updated and improved. For example, additional information became available and changes were made to the methods used to map domestic combustion emissions in the modelling of 2015 concentrations. This has led to increases in modelled PM2.5 concentrations in some locations. The changes will be further refined with further new data and method changes before the 2016 concentration modelling is undertaken.

2.2 The National Air Quality Plan for Nitrogen Dioxide

On July 31st 2017 the National Air Quality plan for nitrogen dioxide was published following a previous draft plan sent out for consultation in May 2017. Prior to publication of the final plan, Defra had advised the Council that the national modelling carried out by them indicated that a Clean Air Zone would be required in Bradford to tackle the high levels of nitrogen dioxide and named Bradford as requiring action. However, the final published plan stated that Bradford was not

required to carry out a feasibility study or implement measures over and above those already planned as the revised modelling had indicated that the levels of nitrogen dioxide would fall below the threshold of 40 micrograms/cubic metre by 2021.

Defra explained that the draft plan had relied on modelling which used estimated 2013 traffic data, whereas the final plan used 'actual' 2015 traffic data and this caused the modelling to predict that the air pollution will be lower than originally modelled for Bradford. Other local authorities including Portsmouth, Bournemouth and Leicester have also been advised they will no longer require a clean air zone.

Defra modelling for Bradford 2017-2027

NO2 ug/m3	2017	2018	2019	2020	2021	2022	2023	2024	2025	2026	2027
Bradford (Draft Defra plan)	48	46	44	43	41	39	37	35	32	31	30
Bradford (Final Defra plan)	47	45	43	41	39	37	35	33	32	30	29

The figures contained in the National Air Quality Plan indicate that Bradford will only just reach compliance in 2021, it is therefore important that the commitments to improve air quality given in the Bradford Low Emissions Strategy and the West Yorkshire Low Emissions Strategy are delivered. Environmental Health continues to work with partners to achieve this.

2.3 Bradford Council Air Quality Monitoring Data

Bradford undertake air quality monitoring at a number of locations across the district. The following two tables below present the levels of Nitrogen Dioxide and particulates as measured at six of the permanent air quality stations.

Site ID	Annual mean concentrations NO ₂ (µg/m ³)										
	(annual average air quality objective level = 40µg/m ³)										
	2006	2007	2008	2009	2010	2011	2012	2013	2014	2015	2016*
Shipley Airedale Rd	70	68	53	108	74	54	52	52	54	48	52
Manningham Lane	47	43	49	46	49	-	-	-	35	42	42
Mayo Avenue	54	-	71	81	83	71	72	75	42	42	46
Thornton Road	44	25	19	18	-	47	50	63	51	33	31

* Provisional data not yet reported to DEFRA

Site ID	Annual Mean Concentration PM10 ($\mu\text{g}/\text{m}^3$) (annual average air quality objective level = 40 $\mu\text{g}/\text{m}^3$)								
	2008	2009	2010	2011	2012	2013	2014	2015	2016
Bingley – Ferncliffe Road	15	15	14.0	12.0	15.0	15.4	13.3	12.6	Not yet verified
Keighley – Town Hall Square	16	20	17.0	13.0	17.3	16.6	12.4	14.0	Not yet verified
Shipley Airedale Rd	-	-	39	30	-	-	-	19.6*	Not yet verified

Note – the results for the PM10's are background and urban centre sites so not typical of worst case roadside concentrations. They indicate that particulate concentrations have generally remained about the same over the past few years.

*During 2012 to 2015 the Shipley Airedale Road site measured PM_{2.5} only. A new dual head PM_{2.5} / PM₁₀ system was installed in August 2015. The PM₁₀ result shown here is an annualised figure based on measurements made between September 2015 and December 2015 only.

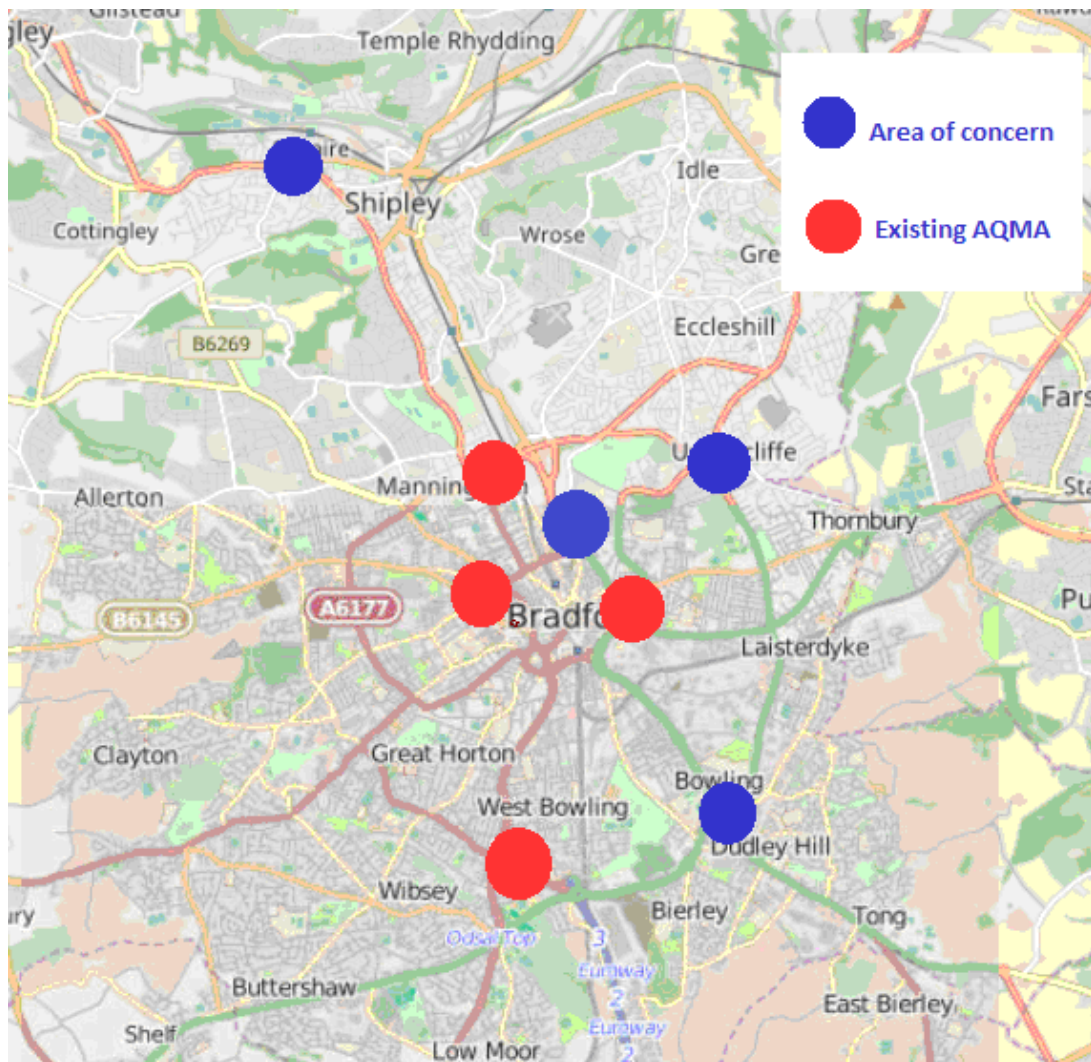
In addition to the air quality stations, diffusion tubes, which measure nitrogen dioxide, are sited at locations within the city where it is considered that air quality may be a problem. The results from this monitoring have indicated that there are air quality problems in further areas. Additional data is being collected and analysed to allow a considered decision to be made about the need to declare further Air Quality Management Areas. The following table presents the data for the areas currently under consideration. An annual report is submitted to Defra about the results of the air quality monitoring and the latest report is currently being drafted, this will identify if the areas identified have not improved and if this is the case formal adoption of the areas as air quality management areas will commence.

Location	Maximum NO ₂ concentration ($\mu\text{g}/\text{m}^3$) measured in the area (annual average air quality objective level = 40 $\mu\text{g}/\text{m}^3$)				
	2012	2013	2014	2015	2016*
Junction of Saltaire Road and Bradford Road	79	65	59	56	60
Rook Lane / Rooley Lane / Tong Street area	49	58	58	51	44
Harrogate Road / Killinghall Road/ Dudley Hill Road	54	57	57	45	43
Canal Road	-	-	-	51 (partial year)	51

*provisional data not yet reported to DEFRA

Monitoring commenced at Canal Road in June 2015 following concerns raised by Defra about air quality in this area. Results indicate the air quality objective is exceeded at roadside locations in this area.

Existing AQMAs and Areas of concern



2.4 Bradford Council Low Emission Strategy

In March 2015 the Low Emissions Zone feasibility Study was presented to the Council Executive. At that meeting the following recommendations were agreed:

- (1) That it be acknowledged that further work is needed following the conclusions of the study to develop policies that focus on the following areas that would deliver improved air quality and health improvements through the reductions in;
 - bus emissions,
 - heavy goods vehicle emissions,
 - the proportion of diesel cars within the Districts passenger car fleet, including the taxi fleet within the District,
 - the overall number of passenger vehicles by increasing levels of active travel and public transport uptake.

(2) That this work is progressed by officers revisiting the Bradford Low Emission Strategy and updating it having regard to the findings of the Low Emission Zone feasibility study. Within that review of the Bradford Low Emission Strategy, a full understanding of the impact, benefits and issues around the practical implementation of a Low Emission Zone should be explored.

(3) That the Low Emission Zone study and its findings are referred to the West Yorkshire Combined Authority to reinforce and support the improvements which can be achieved by “cleaning up the buses”. In particular that this item continues to be a key point in negotiations for the bus quality contract or partnership.

Following on from those recommendations funding was secured from Defra to update the Bradford Low Emissions Strategy. That work is ongoing and is scheduled for completion in 2017.

2.5 Other Tangible Action to Improve Air Quality in Bradford

Opportunities to make a practical change may come about through grant funding or simply a change in policy. The table below provides a summary of the practical steps which have already been taken in a bid to tackle poor air quality in the city.

Bradford low emissions measures	Current status	Outputs and results
Electric Vehicle (EV) charging	Surveys completed at 6 sites including on-street hackney carriage bays. Forming part of WY EV strategy. Plans in place for soft-market testing to invite interest in private investors. Discussions with retail centres to introduce EV chargers at shopping centres. Planning conditions for EV charging on housing developments.	2500 charging points conditioned under approved planning permissions / 4000 under 'live' applications. 5 x Local Transport Plan funded chargers at Bradford University and NHS sites. 8 chargers at Council office/depots. 1 rapid charger (£30,000) at Crown Courts
Fleet	New fleet procurement policy drafted to include whole life costing and ULEV Cars and vans to be considered for Ultra Low Emissions Vehicles (ULEV) or very low emissions. Participant of ULEV Readiness project, 6 month Energy Savings Trust(EST) reported Sep 16.	Reduction of 332 tons of CO2 equivalent 2015/16. 7 electric vans and 2 electric pool cars adopted 2016 with 3 additional charging stations. Travel plan hierarchy promotes bus/rail and ULEV car club vehicles for business trips.
Cycling and Walking	Cycle City Ambition Grant award – infrastructure and engagement. Consulting on 2.3km strategic cycle link to Shipley. £4.6 million bid for DfT Access Fund Sep 16. Will provide training for employees and job seekers and invest in cycling facilities in	£19 million Cycle Super-Highway (Bradford-Leeds) separated cycle-lane opened summer 2016. Bikeability scheme trained 1200 children to level 2. 46 schools involved in

Bradford low emissions measures	Current status	Outputs and results
	workplace.	pedestrian training 2300 children. CBMDC cycle to work scheme since 2013 alongside new cycling facilities.
Taxis	Energy Savings Trust feasibility study complete. Medium scenario already adopted for maximum age 12 years, recommended 10 years for new license. Recommended 10 ULEV only licenses for WY with demonstration vehicles. Working towards a WY Clean Air Zone licensing standard.	£1.9m WY fund to install EV infrastructure for taxis. locations surveyed for town centre rapid-charging stations in Bradford.
Commercial fleets	Ecostars appointed as fleet consultant. Will operate Fleet Recognition scheme 2016-2017. Target of 60 local fleet operators.	Currently engaging with bus operators, local authority fleet (who have gained a 4 star award). Other commercial operators include Boots, Nisa, Bradford NHS, Next, Arnold Laver.
Gas refuelling	Gas (Compressed Natural Gas) refuelling infrastructure included in Depot Redevelopment Plan. New site identified with suitable mains pressure efficient HGV refuelling and partnership with First Bus Bradford.	Gas Feasibility Study 2013 estimated £10-20million saving in fuel costs, 77 tonnes NOx and avoided damage costs estimated at £340k.
Car club	New contract for provider awarded in 2015 introduced 3 vehicles including EV version. Seeking to consolidate with CBMDC corporate users and expansion with new bays provided Sep 16.	Traffic regulation orders for Saltaire village approved for 2 bays. CBMDC account for business users mandated in corporate Travel Plan.
Buses	Partnership work between bus operators and local authority. Scenario analysis from the Bradford Low Emission zone feasibility study for investment in new buses shows significant health benefits. The Clean Bus Technology Fund 2017-2019 is now open with £30m available over a two year scheme. The deadline for bids is 17th November.	25 bus retrofits, currently in service with Selective catalytic reduction Technology (SCRT) and Portable emissions monitoring (PEMs) NOx reduction 95% / 1 tonne/year. 60% reduction in particulate matter. All the school buses across West Yorkshire were retrofitted via grant applied for and administered by WYCA.
Procurement	Draft guidance produced. Reference to Social Value Act. Tender matrix to evaluate pollutant emissions. 5% of overall quality score, scale 1-5 e.g. 5 = ULEV and EURO6 / 0 = no information.	Scheduled for approval Spring 2017

3. OTHER CONSIDERATIONS

Defra have indicated that money may be available to improve air quality in local authorities who are not mandated to take action. We will ensure that Bradford is ready to access any available funding to progress improvement in air quality.

4. OPTIONS

This report was provided at member request to provide an update.

5. FINANCIAL & RESOURCE APPRAISAL

The report is for information only and does not give rise to any potential costs to the authority.

6. RISK MANAGEMENT AND GOVERNANCE ISSUES

The report is for information only at member request..

7. LEGAL APPRAISAL

The Council has a statutory duty to review and assess local air quality under the nationwide system of Local Air Quality Management (LAQM) set out within the Environment Act 1995 as it is doing on an ongoing basis.

8. OTHER IMPLICATIONS

8.1 EQUALITY & DIVERSITY

Previous work carried out as part of the LEZ feasibility study included within it a Health Impact Assessment which also looked at the relationship between pollution levels and deprivation. This found that a significant correlation exists between high pollution levels and areas with deprived populations within the District

8.2 SUSTAINABILITY IMPLICATIONS

The WYLES and the Bradford Low Emissions Strategy support modal shift to more walking and cycling. This, and increased use of public transport, offers a more sustainable approach. The Guidance developed as part of the WYLES, to be used as part of the Development Control process, seeks to ensure that all new developments do not negatively impact on air quality and support the introduction of infrastructure to assist in the move towards a low emissions future.

8.3 GREENHOUSE GAS EMISSIONS IMPACTS

It's recognised that measures to improve air quality, for example switching modes from car to rail journeys or moving to electric vehicles will enable a reduction in GHGs. However the

push for greater fuel efficiency and improved emissions standards alone, will not be sufficient to tackle climate change if fuel savings result in increased mileage on our roads. It is recommended that policies to reduce overall vehicle mileage are prioritised and aligned with health and wellbeing objectives.

8.4 COMMUNITY SAFETY IMPLICATIONS

There are no community safety implications.

8.5 HUMAN RIGHTS ACT

There are no human rights issues arising from this report.

8.6 TRADE UNION

There are no trade union issues arising out of this report.

8.7 WARD IMPLICATIONS

There are no ward issues arising out of this report

9. NOT FOR PUBLICATION DOCUMENTS

- None.

10. RECOMMENDATIONS

It is recommended that members consider the contents of the report and support officers in their continued measures to tackle poor air quality across the District.

11. APPENDICES

- None.

12. BACKGROUND DOCUMENTS

- Bradford Air Quality Strategy
- Bradford Low Emissions Strategy.
- Bradford Low Emissions Zone Feasibility Study
- Air quality plan for nitrogen dioxide (NO₂) in UK (2017)



Report of the Strategic Director of Health and Wellbeing to the meeting of Environment and Waste Management Overview and Scrutiny Committee to be held on Tuesday 26th September 2017.

H

Subject:

Utilisation of outdoor space for health reasons

Summary statement:

Good quality outdoor spaces create opportunities for health and wellbeing. This paper seeks to outline the opportunities and challenges across the district, and highlights how utilisation of outdoor spaces is contributing to the district strategic priorities.

Bev Maybury
Director of Health and Wellbeing

Portfolio:

Cllr Sarah Ferriby (Environment, Sport and Culture)

Cllr Val Slater (Health and Wellbeing)

Report Contact: Caroline Tomes,
Public Health Specialty Registrar
Phone: (01274) 437352
E-mail: Caroline.Tomes@bradford.gov.uk

Overview & Scrutiny Area:

Environment and Waste Management

1. SUMMARY

- 1.1 Attractive, safe and accessible outdoor spaces contribute positive social, economic and environmental benefits, including improving public health and wellbeing of residents (Landscape Institute, 2013). This paper provides a definition of outdoor space, presents available information on outdoor space across the district, and outlines the case for outdoor space, considering both the benefits and challenges for the district of Bradford.

2. BACKGROUND

2.1 *The EWMOSC*

- 2.11 The EWMOSC was updated in March 2015 (background document 1) and March 2016 (background document 2) in regards to the Public Health Outcome Framework (PHOF) indicator 1.16 'utilisation of outdoor space for exercise/health reasons'. In March 2016, the EWMOSC requested that a more in-depth report on the utilisation of outdoor space for health reasons to be presented in the next municipal year. This report seeks to fulfill this request.

2.2 *Defining outdoor spaces*

- 2.21 This paper's title was informed by the PHOF indicator 1.16 which reports the 'utilisation of outdoor space for exercise/health reasons' annually for each local authority in England. This indicator provides information on the "proportion of residents in each area taking a visit to the natural environment for health or exercise purposes" as measured by the Monitor of Engagement with the Natural Environment (MENE) survey. The survey defined the natural environment to include open spaces in and around towns and cities, parks, canals and nature areas; the coast and beaches; and the countryside including farmland, woodland, hills and rivers. This definition included both urban and rural outdoor space; it excluded time spent in the garden and shopping trips from time being outside.
- 2.22 In practice, there is no single accepted definition of outdoor space; most definitions tend to vary and overlap depending on the context and environment. Terms such as 'public space', 'open space', 'urban space' and 'green space' are often used interchangeably. Currently there is no evidence to suggest a certain proximity, amount or type of 'space' produces more benefit over another. For the purpose of this report we will refer to 'green space' as an all-encompassing term for open and outdoor spaces which can be considered of public value.

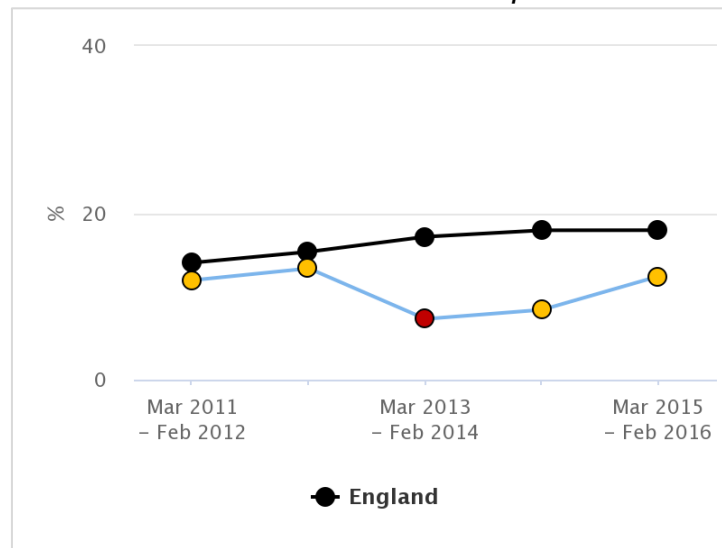
3. OTHER CONSIDERATIONS

3.1 *An update on PHOF Indicator 1.16*

- 3.11 Graph 1 (below) shows the proportion of Bradford residents using outdoor space for exercise/health reasons between 2011 and 2016, via the MENE survey. Graph 1 shows that in Bradford the percentage of people using outdoor space for exercise or health reasons has remained lower than the English average during this time period. However, it is important to note that the data for Bradford has not been statistically significantly different from the English average, apart for the period

2013-2014 (coloured red in the graph). It is unclear why the data for 2013-2014 was statistically significantly lower than the English average.

Graph 1: PHOF indicator 1.16 utilisation of outdoor space for exercise/health reasons



- 3.12 The latest data shows that the percentage of people using outdoor space for exercise or health reasons in 2015-2016 was 12.4% in Bradford. Although this remains lower than the English (17.9%) and regional average (17.5%) for the same time period; positively, the gap between Bradford and these comparators appears to be closing.

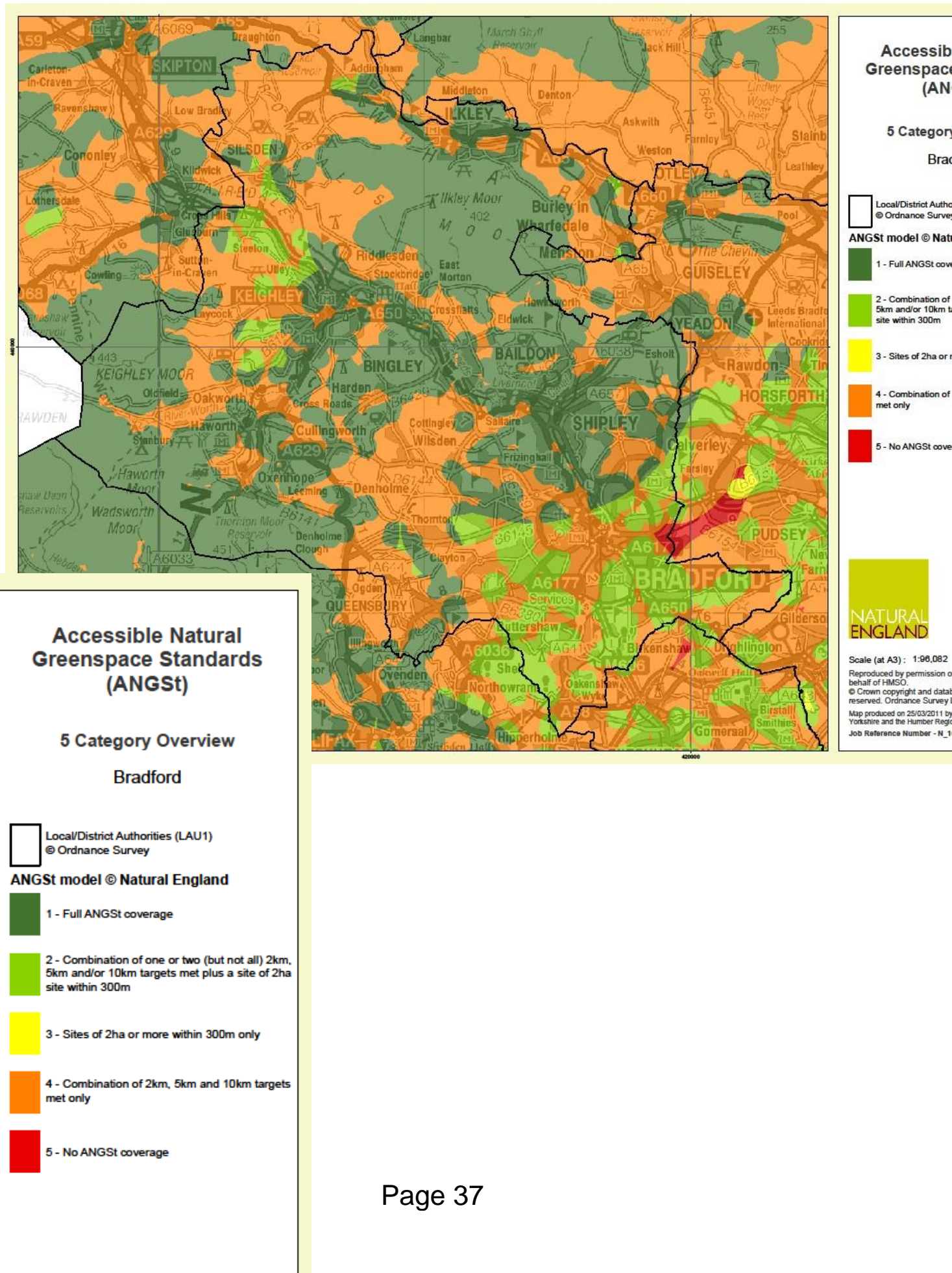
3.2 Outdoor space across Bradford district

- 3.21 This section summarises available data sources and maps showcasing the availability of green space across the district of Bradford. Map 1 (below) is provided by Natural England and shows accessible and natural green space across the district. It excludes green-belt or agricultural land that may be accessible on footpaths but is not defined as 'accessible' under the standard. This map highlights the abundance of green space across the district, particularly to the north and west.
- 3.22 'Accessible' green space is considered to be that which is located close to resident's homes, easy to walk to, physically accessible, safe to use, and provides well maintained facilities. Map 2 (below) is also provided by Natural England and shows how the district measures against the Accessible Natural Green Space Standards (ANGSt). In essence, the greener areas indicate that a range of green spaces are easily accessible to residents in the area, whereas yellow/orange/red indicate areas where a reasonably sized local park is not within close proximity (300m). It should be noted that many country footpaths (public footpaths on private land) may not be picked up by the ANGSt criteria. However Map 2 is useful in highlighting that green space is less easy to access in certain parts of Bradford City and to the south of the district, as well as Keighley going north along the A629, Silsden, the A65, and some pockets around Wilsden, Queensbury and Menston.

Map 1: Accessible and Natural Green Space across the Bradford District



Map 2: Accessible Natural Green Space Standards (ANGSt) across the Bradford District



3.3 *The benefits of using outdoor space for health*

- 3.31 There is significant and growing evidence on the physical and mental health benefits of outdoor space. Research shows that access to outdoor space is associated with better health outcomes and income-related inequality in health is less pronounced where people have access to outdoor space.
- 3.32 Benefits of access to green space include:
- Improved mental health and wellbeing for children, young people and adults
 - Increased likelihood of physical activity across all age groups
 - Reduced violence and aggression: a reduction in antisocial behaviour and incidence of crime in urban areas with green spaces
 - Reduced health inequalities: significant reductions in mortality and morbidity from all causes and circulatory disease associated with areas of greater green space. This result takes into account effects of income deprivation
 - Improvement in air and noise quality
 - Economic benefits (for more detail, please see background document 4).
- 3.33 Research by Public Health England and UCL Institute of Health Equity (background document 3) has reported:
- Access to outdoor space is not equal across the population of England. Research shows that people living in the most deprived areas are less likely to have access to green areas, and will therefore have less opportunity to gain the health benefits compared to people living in more affluent areas.
 - Increasing the use of good quality green space for all social groups (a universal approach) is likely to improve health outcomes and reducing inequalities. It can also bring other benefits such as greater community cohesion and less social isolation.
 - Proximity to plentiful, good quality outdoor space has an important influence on the health of local people. Furthermore, good quality outdoor space which is accessible is associated with better and more frequent use.
- 3.34 As such, encouraging people to have contact with safe, green spaces can improve a number of aspects of mental and physical health and wellbeing, as well as various social and environmental indicators. Safe, green spaces can increase levels of communal activity across different social groups, as well as increase residents' satisfaction with their local area.
- 3.35 In particular, the benefit of green spaces in helping to promote regular physical activity is significant. Research shows that physical activity can boost self-esteem, mood, sleep quality and energy, as well as reducing the risk of stress, depression, dementia and Alzheimer's disease (NHS Choices website). Current local information about use of green spaces for health reasons is not available for Bradford District (beyond PHOF 1.16). However section 3.71 highlights some of the many examples of green spaces being used for physical activity and health reasons.
- 3.36 Nationally, there has been a significant decline in time spent outside for children and teenagers over a five-year period (see background document 5). Positively,

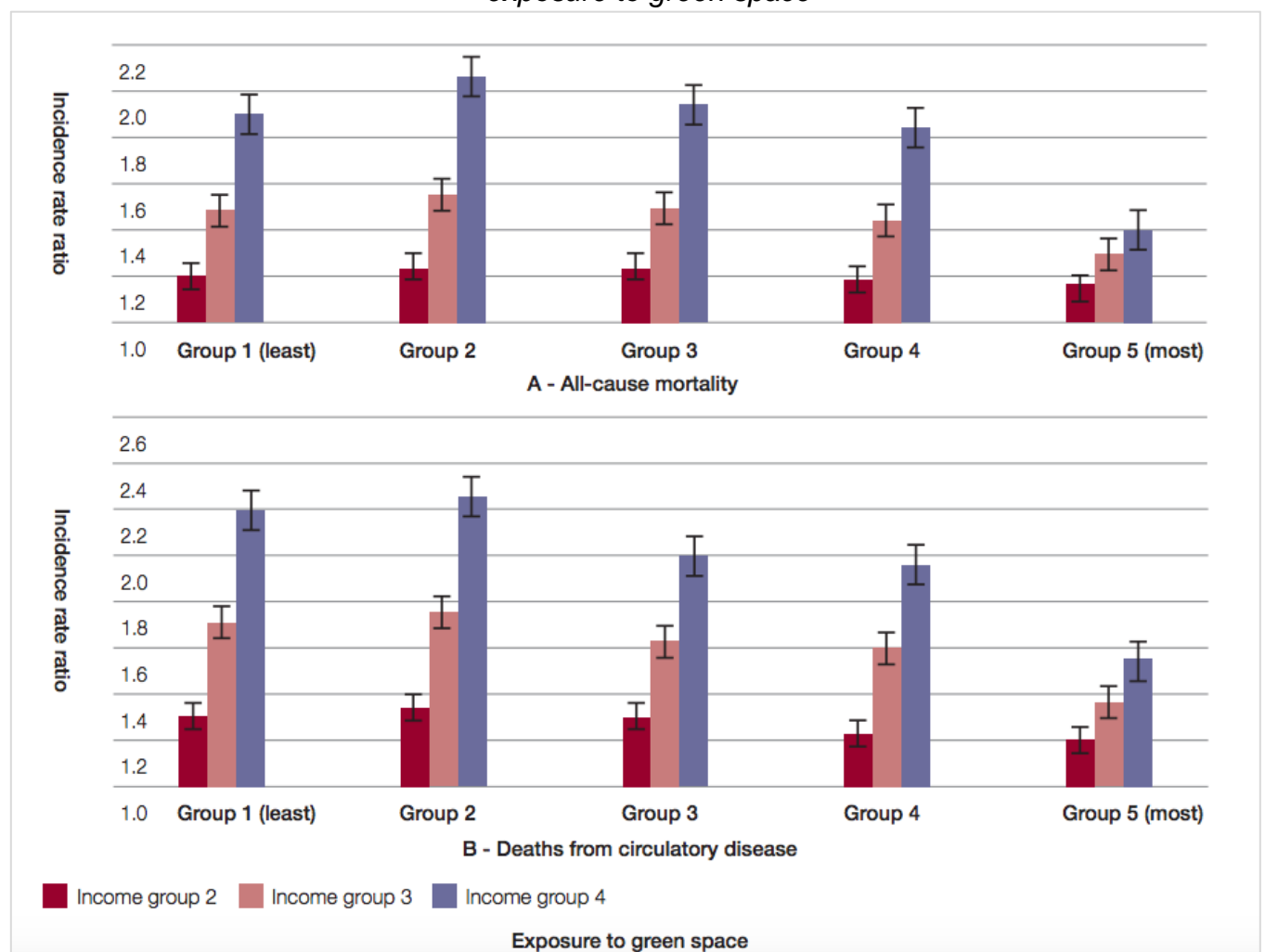
research shows that spending time outside playing is likely to increase the physical activity levels of children. In areas with limited access to green space, research from Play England highlighted that temporary road closures for ‘Street Play’ helped children to meet the daily target of 60 minutes moderate to vigorous physical activity set out in the government’s obesity strategy.

3.4 The impact of green space on health and social inequalities

3.41 Access and proximity to green space is not equally distributed across the Bradford population, as highlighted by Maps 1 and 2 above. People living in more deprived neighbourhoods tend to experience less favourable living and environmental conditions compared to people living in more affluent areas. For example, research has shown that nationally the 20% most affluent wards in England have five times the amount of outdoor space compared with the 10% most deprived wards.

3.42 Such inequalities have an impact on accessing the benefits associated with green space, including health outcomes. Graph 2 shows an income-related gradient in all cause and circulatory disease mortality. The graph shows that people who have less exposure to green space are likely to die earlier. This association appears to be stronger for people from lower-income groups.

Graph 2: income-related gradient in all cause and circulatory disease mortality, and exposure to green space



3.5.3 The distribution of outdoor space is also related to levels of urbanisation. Living in urban areas can expose people to stressors including noise, pollution, crowding, fear of crime and limited access to good quality outdoor space. Research suggests that those most at risk of poor health are more likely to live in the most deprived environments, which can have a cumulatively negative impact on health.

3.5.4 To reduce inequalities it is important that interventions to improve access to green spaces are available to the whole population (a universal approach), but with a scale and intensity that is proportionate to local need. Integrating principles of sustainability (see section 3.93) will further protect communities and their environments from widening inequalities.

3.6 *Motivations and barriers regarding the use of green space*

3.6.1 Analysis of the MENE survey at a national level identified a range of reasons why people were motivated to use outdoor spaces. These included:

- Exercising dogs
- Personal health and exercise
- Relaxation and unwinding
- Enjoying fresh air
- Pleasant weather and scenery

3.6.2 Research from the Health Foundation adds to the evidence that health is influenced by how our surroundings make us feel and the opportunities they provide. Good places, spaces and buildings create opportunities to:



3.6.3 The MENE survey identified several groups who were less likely to visit outdoor spaces than the national average. These included:

- Some minority ethnic groups
- Urban deprived populations
- More disadvantaged socioeconomic groups
- People aged over 65
- Disabled people

3.6.4 A range of reasons were reported by the MENE survey for not using outdoor spaces. These included:

- Being too busy at work
- Poor weather
- Being too busy at home
- Poor health and old age
- As well as no particular reason

3.6.5 Data collected from the MENE survey as part of an intervention that sought to increase green space engagement among 'hard to reach groups' found people unwilling to use outdoor spaces due to poor maintenance of sites, inadequate facilities and personal safety fears.

3.7 *Using green space for health reasons across Bradford District*

3.7.1 Below are some local examples of local green space being used for health reasons across the Bradford District:

- Cycling 4 all initiative in Lister Park (sessions available for students and the public)
- Bradford parkrun (Lister Park), Horton Park parkrun and a junior parkrun in Roberts Park (free weekly events where participants run 5k)
- Walking groups (e.g. dementia friendly walks, voluntary walking groups in parks)
- Daily Mile (daily 15 minute walk for children in participating schools)
- Bradford City Runs (take place in the Autumn)
- Cycle Super Highway (to Leeds)
- GreenLine Mile routes (four available, with a fifth in development)
- Active Travel to School Programme provided by Sustrans (the programme works with schools and children on walking, cycling and scooting)
- Grange Interlink, Thornbury Centre and Keighley Healthy Living Centre provide programmes to increase physical activity, an important element of this is utilising green space and encouraging walking and cycling
- HAPP (Healthy Active Play Partners) for families with overweight children aged 5-11, much of the opportunities that families are encouraged to take up are outdoor programmes, using their local park and play pods
- Community allotments
- Park gyms (e.g. Bowling Park, Lund Park and White Bear Recreation Ground)
- Children's playgrounds
- Bradford City Cycling mass Participation event (takes place in summer)
- HSBC Lets Ride and Social Ride Programme (in partnership with British Cycling)

3.8 *Local opportunities to strengthen the use of green spaces for health*

3.81 Although not explicitly mentioned, promoting and using outdoor space for health reasons supports the strategic priorities of the Bradford district:

- The Bradford District Plan (2016-2020)
- The Bradford Council Plan (2016-2020)
- The Core Strategy Development Plan (with particular reference to Green Infrastructure)
- Integrated Early Years Strategy (2015-2018)
- Active Bradford Physical Activity and Sport – strategic framework (2017)
- Bradford Playing Pitch Strategy Assessment Report and Strategy (2014-2021)
- Physical Activity Charter (in development)
- Better Start Bradford funding and activities

3.82 Evidence highlights that in order to reduce inequalities in access to green space, interventions to improve access should be available to the whole population, but with scale and intensity that is proportionate to need. Local authorities are well placed to understand local needs and deliver appropriate action to provide good quality, safe and accessible areas of green space that meet the needs of all their population.

3.83 It is important to consider what motivates local residents to engage with green spaces and venture outside. Doing so may help overcome common barriers that prevent people from accessing and engaging with green spaces, as well as improving community cohesion and action.

3.84 Local community groups can play a part in increasing accessibility, engagement and use of green space and therefore increase local community assets. Action taken by local community groups includes creating play areas and taking part in cleaning up operations.

3.9 *Local challenges in using green spaces for health*

3.91 There are limited finances available for initiatives promoting the use of green spaces for health. Although numerous green spaces exist across the district, there are increasing pressures on the options to maintain the upkeep of such assets.

3.92 Local survey findings from Better Start Bradford indicate some perceptions and concern regarding green spaces being unsafe or unsuitable for use. Such perceptions are important as they influence the motivations and behaviours of residents to engage and use their local green spaces.

3.93 A third challenge in promoting the use of green spaces across the district is to integrate principles of sustainability to protect communities and their environments. The five principles of sustainability are considered to include the following:



4. FINANCIAL & RESOURCE APPRAISAL

- 4.1 Tackling public health issues required long term commitment and investment. Much of this already exists and is directed towards activity which will positively influence this indicator. This includes Council investment as well as external funding from central government departments.

5. RISK MANAGEMENT AND GOVERNANCE ISSUES

- 5.1 None

6. LEGAL APPRAISAL

- 6.1 Part 1 of the Health and Social Care Act 2012 (the Act) places legal responsibility for Public Health within Bradford Council. Specifically Section 12 of the Act created a new duty requiring Local Authorities to take such steps as they consider appropriate to improve the health of the people in its area. The Public Health department in the Local Authority supports the performance of this duty.
- 6.2 Section 31 of the Act required Local Authorities to pay regards to guidance issued by the Secretary of State for Health when exercising their public health functions and in particular Local Authorities are required to have regard to the Department of Health's Public Health Outcomes Framework.

7. OTHER IMPLICATIONS

7.1 EQUALITY & DIVERSITY

- 7.11 Access to outdoor space is not equal across the population of England. Research shows that people living in the most deprived areas are less likely to have access to green areas, and will therefore have less opportunity to gain the health benefits compared to people living in more affluent areas.

7.2 SUSTAINABILITY IMPLICATIONS

- 7.21 Provision of green space will be important for future district residents. Demographic, environmental and economic pressures are liable to persist into the mid 21st Century. The report highlights the need to recognise the contribution of green spaces for health outcomes. A sustainability oriented policy approach will ensure that green space is safeguarded for future generations. Green space is being increasingly seen as an important protective and resilient infrastructure to buffer populations against climate impacts. Its value will increase as climate impacts worsen.

7.3 GREENHOUSE GAS EMISSIONS IMPACTS

- 7.31 Actions to improve utilisation of green spaces may reduce greenhouse gas emissions. Active travel is a low cost abatement option which, if effective could significantly reduce GHG emissions. Local environmental improvement and social activity to increase active travel are intrinsic to this approach. More broadly, GHGs are embedded in natural assets and degradation will result in emissions.

7.4 COMMUNITY SAFETY IMPLICATIONS

- 7.41 In broad terms, perception of safety and security within residential and community environments can be influenced by proximity and access to good quality green space.

7.5 HUMAN RIGHTS ACT

- 7.51 None

7.6 TRADE UNION

- 7.61 None

7.7 WARD IMPLICATIONS

- 7.71 PHOF indicators are complex and are influenced by differences in economic, cultural and social factors across populations and communities. Across the 30 wards of Bradford, achievement against each of the indicators will vary substantially.

7.8 AREA COMMITTEE ACTION PLAN IMPLICATIONS (for reports to Area Committees only)

- 7.81 None

8. NOT FOR PUBLICATION DOCUMENTS

- 8.1 None

9. OPTIONS

- 9.1 None provided

10. RECOMMENDATIONS

- 10.1 The views of the Environment and Waste Management Overview and Scrutiny Committee are requested.

11. APPENDICES

- 11.1 None

12. BACKGROUND DOCUMENTS

1. Minutes of a meeting of the Environment and Waste Management Overview and Scrutiny Committee held on Tuesday 31 March 2015
2. Minutes of a meeting of the Environment and Waste Management Overview and Scrutiny Committee held on Tuesday 8 March 2016
3. Public Health England and UCL Institute of Health Equity, Health Equity Evidence Review 8 (September 2014) "Local action on health inequalities: improving access to green spaces"
4. Faculty of Public Health, briefing statement "Great Outdoors: How Our Natural Health Service Uses Green Space to Improve Wellbeing", 2010
5. Cleland et al, Predictors of time spent outdoors among children: 5-year longitudinal findings, Journal of Epidemiology and Community Health, Vol64 Issue 5

This page is intentionally left blank



Report of the Chair of the Environment and Waste Management Overview and Scrutiny Committee to be held on Tuesday 26 September 2017.

Subject:

Environment and Waste Management Overview and Scrutiny Committee – Work Programme 201/18.

Summary statement:

This report presents the Committee’s Work Programme 2017-18.

Cllr Kevin Warnes
Chair – Environment and Waste Management
Overview and Scrutiny Committee

Portfolio:

**Environment.
Transport.**

Report Contact: Mustansir Butt
Overview and Scrutiny Lead
Phone: (01274) 432574
Email: mustansir.butt@bradford.gov.uk

Overview & Scrutiny Area:

Environment & Waste Management.

1. SUMMARY

- 1.1 This report presents the Environment and Waste Management Overview and Scrutiny Committees work programme for 2017/18.

2. BACKGROUND

- 2.1 Each Overview and Scrutiny Committee is required by the Constitution of the Council to prepare a work programme (Part 3E – Overview and Scrutiny Procedure Rules, Para 1.1).

3. OTHER CONSIDERATIONS

- 3.1 The Environment and Waste Management Overview and Scrutiny Committee has responsibility for “the strategies, plans, policies, functions and services directly relevant to the corporate priority about improving waste management and the environment.” (Council Constitution, Part 2, 6.2.1).
- 3.2 The remit of this Committee also includes the strategies, plans, functions and services directly relevant to the corporate priorities about reducing carbon emissions, transport and highways, creating a greener and more sustainable environment and positively affecting climate change.
- 3.3 Best practice published by the Centre for Public Scrutiny suggests that “work programming should be a continuous process”. It is important to review work programmes, so that important or urgent issues that arise during the year are able to be scrutinised. Furthermore, at a time of limited resources, it should also be possible to remove areas of work which have become less relevant or timely. For this reason, it is proposed that the Committee’s work programme be regularly reviewed by members of the committee throughout the municipal year.
- 3.4 The work programme as agreed by the Committee will form the basis for the Committee’s work during the year, but will be amended as issues arise during the year.

4. FINANCIAL & RESOURCE APPRAISAL

- 4.1 None.

5. RISK MANAGEMENT AND GOVERNANCE ISSUES

- 5.1 None.

6. LEGAL APPRAISAL

- 6.1 None.

7. OTHER IMPLICATIONS

7.1 EQUALITY & DIVERSITY

Community Cohesion and Equalities related issues are part of the work remit for this Committee.

7.2 SUSTAINABILITY IMPLICATIONS

This is a key work area for the Committee.

7.3 GREENHOUSE GAS EMISSIONS IMPACTS

This is a key work area for the Committee.

7.4 COMMUNITY SAFETY IMPLICATIONS

A key area of work for the Committee will be to consider the area of those killed or seriously injured on roads.

7.5 HUMAN RIGHTS ACT

None.

7.6 TRADE UNION

None.

7.7 WARD IMPLICATIONS

Work of this Overview and Scrutiny Committee has ward implications, but this depends on that nature of the topic.

8. NOT FOR PUBLICATION DOCUMENTS

None.

9. OPTIONS

9.1 The Committee may choose to add to or amend the proposed items to be included in the 2016-17 work programme for the committee.

9.2 Members may wish to consider any detailed scrutiny reviews that it may wish to conduct.

10. RECOMMENDATIONS

10.1 That members consider and comment on the areas of work included in the 2017-18 Work Programme for the Committee.

- 10.2 That members consider any detailed scrutiny reviews that they may wish to conduct.
- 10.3 That the work programme 2017-18 continues to be reviewed regularly during the year.

11. APPENDICES

Appendix One – 2017-18 Work Programme for the Environment and Waste Management Overview and Scrutiny Committee.

Appendix Two – List of unscheduled topics.

12. BACKGROUND DOCUMENTS

Council Constitution.

Democratic Services - Overview and Scrutiny

Environment & Waste Management O&S Committee

Scrutiny Lead: Mustansir Butt tel - 43 2574

Work Programme

Page 51

Agenda	Description	Report	Comments
Tuesday, 4th July 2017 at City Hall, Bradford.			
Report deadline 21/06/2017.			
1) Appointment of Co-opted Members.	Key findings and review recommendations.	Mustansir Butt.	Re-convened.
2) Water Management Scrutiny Review.		Mustansir Butt.	
3) Renewables Future for Bradford Council.		Neil Morrison.	Re-convened.
Tuesday, 25th July 2017 at City Hall, Bradford.			
Chair's briefing 10/07/2017. Report deadline 12/07/2017.			
1) City Connect to Canal Road Cycleway.		Chris Bedford	£2m Procurement Contract. Called-In from a decision made by the Bradford East Area Committee on Tuesday 11 July 2017.
2) Call-In, in relation to Bradford Canal Road Corridor Cycleway Scheme.		Chris Bedford.	
3) Bulky Waste Refuse Collections.		Steve Hartley/Richard Longcake.	
4) Ilkley Moor Management Plan.	The final draft of the Ilkley Moor Management Plan to be presented to the Committee prior to its submission to Natural England for consent.	Danny Jackson.	Environment & Waste Management Overview and Scrutiny Committee recommendation from Tuesday 28 March 2017.
5) DRAFT Work Programme 2017-18.	Discussion and agreement over the areas of work to focus on in this Muncipal Year.	Mustansir Butt.	
Tuesday, 26th September 2017 at City Hall, Bradford.			
Chair's briefing 08/09/2017. Report deadline 13/09/2017.			
1) Bradford Environment Forum Annual Report.		Julia Pearson.	
2) Environment Agency Annual Report.		Nicola Hoggart.	

Environment & Waste Management O&S Committee

Scrutiny Lead: Mustansir Butt tel - 43 2574

Work Programme

Agenda	Description	Report	Comments
Tuesday, 26th September 2017 at City Hall, Bradford.			
Chair's briefing 08/09/2017. Report deadline 13/09/2017.			
3) Air Quality/Fraction of mortality attributable to particulate air pollution.	Progress Update.	Ruth Lees/Sarah Possingham/James Brass.	Environment & Waste Management Overview and Scrutiny Committee recommendation from Tuesday 20 December 2016.
4) Utilisation of outdoor spaces for health reasons.		Sarah Possingham/James Brass.	Environment & Waste Management Overview and Scrutiny Committee recommendation.
5) Work Planning.	There is a need to regularly review the work programme, in order to prioritise and manage resources.	Mustansir Butt.	
Tuesday, 31st October 2017 at City Hall, Bradford.			
Chair's briefing 13/10/2017. Report deadline 18/10/2017.			
1) Biodiversity - Scene Setting.	Scrutiny Review.	Danny Jackson.	Member request from the Environment & Waste Management Overview and Scrutiny Committee on Tuesday 25 July 2017.
2) The Procurement of the new waste treatment contract for the treatment of kerbside residual waste.		Steve Hartley/Richard Longcake.	Environment & Waste Management Overview and Scrutiny Committee recommendation from Tuesday 28 February 2017.
3) Management of Waste and Recycling Activities.		Steve Hartley/Richard Longcake.	Environment & Waste Management Overview and Tuesday 25 October 2016.
4) Fuel Poverty Framework for Action and Leeds City Region Green Deal Contract.	Update on progress.	Pete Betts.	Environment & Waste Management Overview and Scrutiny Committee recommendation for Tuesday 26 July 2016.
5) Work Planning.	There is a need to regularly review the work programme, in order to prioritise and manage resources.	Mustansir Butt.	

Environment & Waste Management O&S Committee

Scrutiny Lead: Mustansir Butt tel - 43 2574

Work Programme

Agenda	Description	Report	Comments
Tuesday, 21st November 2017 at City Hall, Bradford.			
Chair's briefing 03/11/2017. Report deadline 08/11/2017.			
1) Rights of Way.		Danny Jackson.	Request from a member of the public. Environment & Waste Management Overview and Scrutiny Committee recommendation from Tuesday 29 November 2016.
2) Performance Outturn for Transport and Highways.		Julian Jackson/Richard Gelder.	
3) Performance Outturn for Waste Management.		Steve Hartley/Richard Longcake/John Major.	Environment & Waste Management Overview and Scrutiny Committee recommendation from Tuesday 20 September 2016.
4) Update on Flytipping across the District.		Richard Longcake/John Major/Louise Williams.	Environment and Waste Management Overview and Scrutiny Committee recommendation from Tuesday 25 July 2017.
5) Work Planning.	There is a need to regularly review the work programme, in order to prioritise and manage resources.	Mustansir Butt.	
Tuesday, 19th December 2017 at City Hall, Bradford.			
Chair's briefing 01/12/2017. Report deadline 06/12/2017.			
1) Role of Council Wardens - Scene Setting.	To establish whether there is a need to undertake a review of the role of Council Wardens.	Mustansir Butt.	Referral from the Regeneration & Economy Overview and Scrutiny Committee from 30 November 2016.
2) Environment Enforcement Strategy.		Ian Day.	Environment & Waste Management Overview Committee recommendation.
3) West Yorkshire LTP3 Implementation Plan.		Julian Jackson/Richard Gelder.	Environment & Waste Management Overview and Scrutiny Committee recommendation from Tuesday 29 November 2016.
4) West Yorkshire Combined Authority .	To focus on the Transport elements.	Julian Jackson.	

Environment & Waste Management O&S Committee

Scrutiny Lead: Mustansir Butt tel - 43 2574

Work Programme

Page 54

Agenda	Description	Report	Comments
Tuesday, 19th December 2017 at City Hall, Bradford.			
Chair's briefing 01/12/2017. Report deadline 06/12/2017.			
5) Bradford Civic Heat Quarter District Heat Network.	Progress report.	Pete Betts.	Environment & Waste Management Overview and Scrutiny Committee recommendation from Tuesday 28 February 2017.
6) Work Planning.	There is a need to regularly review the work programme, in order to prioritise and manage resources.	Mustansir Butt.	
Tuesday, 23rd January 2018 at City Hall, Bradford.			
Chair's briefing 05/01/2018. Report deadline 10/01/2018.			
1) Budget setting for Environment and Waste Management.		Steve Hartley/Julian Jackson.	
2) Resolution Tracking.	To monitor the progress made against the recommendations made by the Committee.	Mustansir Butt.	
3) Work Planning.	There is a need to regularly review the work programme, in order to prioritise and manage resources.	Mustansir Butt.	
Tuesday, 20th February 2018 at City Hall, Bradford.			
Chair's briefing 02/02/2018. Report deadline 07/02/2018.			
1) Trade Waste Update.	Progress of service improvements, particuarlay the ability for the domestic refuse service toundertake certain trade waste and recycling collections during 2017.	Steve Hartley/Richard Longcake.	Environment & Waste Management Overview and Scrutiny Committee recommendtaion from Tuesday 28 February 2017.
2) Work Planning.	There is a need to regularly review the work programme, in order to prioritse and manage resources.	Mustansir Butt.	

Environment & Waste Management O&S Committee

Scrutiny Lead: Mustansir Butt tel - 43 2574

Work Programme

Agenda	Description	Report	Comments
Tuesday, 27th March 2018 at City Hall, Bradford.			
Chair's briefing 09/03/2018. Report deadline 14/03/2018.			
1) Progress against the Safer Roads element of the Single Transport Plan.	To also include casualty performance and a financial update.	Simon D'Vali.	Environment & Waste Management Overview and Scrutiny Committee recommendaion form Tuesday 28 March 2017.
2) Energy efficiency of Private Sector Rented Housing and legislative impacts.		Julie Rhodes/Pete Betts.	Environment & Waste Management Overview and Scrutiny Committee recommendation from Tuesday 18 April 2017.
3) Work Planning.	There is a need to regularaly review the work programme, in order to prioritise and manage resources.	Mustansir Butt.	
Tuesday, 17th April 2018 at City Hall, Bradford.			
Chair's briefing 23/03/2018. Report deadline 04/04/2018.			
1) Bradford Beck Pilot Study Rivers Trust.	Progress Uodate.	Chris Eaton/Edward Norfolk/Barney Lerner.	Environment & Waste Management Overview Scrutiny Committee recommendation from Tuesday 28 March 2017.
2) Bradford Distict Cycling Strategy.	To also include progress against key performance indicators and Action Plan presented in 12 months.	Tom Jones.	Environment & Waste Management Overview and Scrutiny Committee recommendation from Tuesday 28 March 2017.
3) Rail Strategy Update.		Neil Moore.	Environment & Waste Management Overview and Scrutiny Committee recommendation from Tuesday 28 March 2017.
4) Resolution Tracking.	To monitor progress the progress made against the recommendations made by the Committee.	Mustansir Butt.	

This page is intentionally left blank

Democratic Services - Overview and Scrutiny

Scrutiny Committees Forward Plan

Unscheduled Items

Environment & Waste Management O&S Committee

Agenda item	Item description	Author	Management
1	West Yorkshire Combined Authority.	Julian Jackson/Jamie Saunders.	
2	Alternate weekly bin collection trial the District. Wkye.	John Major.	To receive regular updates as alternate refuse collection is implemented across

This page is intentionally left blank